



COVID-19 Vaccine Response

January 6, 2021

VPD and Immunizations Program

- Vaccines For Children Program
 - Entitlement program providing vaccines to under/uninsured children < 19yo
 - 625 partners vaccinate ~800K TN children
 - Annual budget \$119M
 - Manages 2M vaccine doses/year
- Tennessee Immunization Information System (TennIIS)
 - Statewide immunization registry
 - >8.2M patients, >78M vaccinations
- Vaccine-Preventable Diseases Program
 - Investigates and mitigates vaccine-preventable disease outbreaks
 - Pandemic preparedness
- Pandemic Vaccine Allocation and Distribution
 - COVID-19 vaccine for ~6.8M Tennesseans



Vaccine Safety

Before a new vaccine is ever given to people, extensive lab testing is done that can take several years. Once testing in people begins, it can take several more years before clinical studies are complete and the vaccine is licensed.

How a new vaccine is developed, approved and manufactured

The Food and Drug Administration (FDA) sets rules for the three phases of clinical trials to ensure the safety of the volunteers. Researchers test vaccines with adults first.

PHASE 1



**20-100
healthy volunteers**

- Is this vaccine safe?
- Does this vaccine seem to work?
- Are there any serious side effects?
- How is the size of the dose related to side effects?

PHASE 2



**several hundred
volunteers**

- What are the most common short-term side effects?
- How are the volunteers' immune systems responding to the vaccine?

PHASE 3



**hundreds or thousands
of volunteers**

- How do people who get the vaccine and people who do not get the vaccine compare?
- Is the vaccine safe?
- Is the vaccine effective?
- What are the most common side effects?

FDA licenses the vaccine only if:

- It's safe and effective
- Benefits outweigh risks

Vaccines are made in batches called lots.



Manufacturers must test all lots to make sure they are safe, pure and potent. The lots can only be released once FDA reviews their safety and quality.



The FDA inspects manufacturing facilities regularly to ensure quality and safety.



FOR MORE INFORMATION, VISIT [HTTPS://WWW.FDA.GOV/CBER](https://www.fda.gov/cber)

Vaccine Safety

How a new vaccine is developed, approved and manufactured

The Food and Drug Administration (FDA) sets rules for the three phases of clinical trials to ensure the safety of the volunteers. Researchers test vaccines with adults first.

PHASE 1

20-100
healthy volunteers

- Is this vaccine safe?
- Does this vaccine seem to work?
- Are there any serious side effects?
- How is the size of the dose related to side effects?

PHASE 2

several hundred
volunteers

- What are the most common short-term side effects?
- How are the volunteers' immune systems responding to the vaccine?

PHASE 3

hundreds or thousands
of volunteers

- How do people who get the vaccine and people who do not get the vaccine compare?
- Is the vaccine safe?
- Is the vaccine effective?
- What are the most common side effects?

FDA licenses the vaccine only if:

- It's safe and effective
- Benefits outweigh risks

Vaccines are made in batches called lots.



Manufacturers must test all lots to make sure they are safe, pure and potent. The lots can only be released once FDA reviews their safety and quality.

The FDA inspects manufacturing facilities regularly to ensure quality and safety.



FOR MORE INFORMATION, VISIT [HTTPS://WWW.FDA.GOV/CBER](https://www.fda.gov/cber)

Vaccines are made in batches called lots.



Manufacturers must test all lots to make sure they are safe, pure and potent. The lots can only be released once FDA reviews their safety and quality.

The FDA inspects manufacturing facilities regularly to ensure quality and safety.



Phase 1-3 Clinical Trials
& Manufacturing



FDA Emergency Use
Authorization (EUA)
ACIP Recommendations

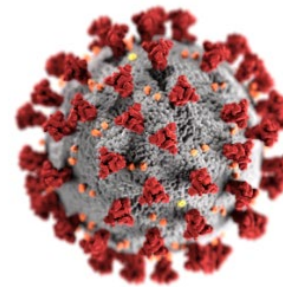
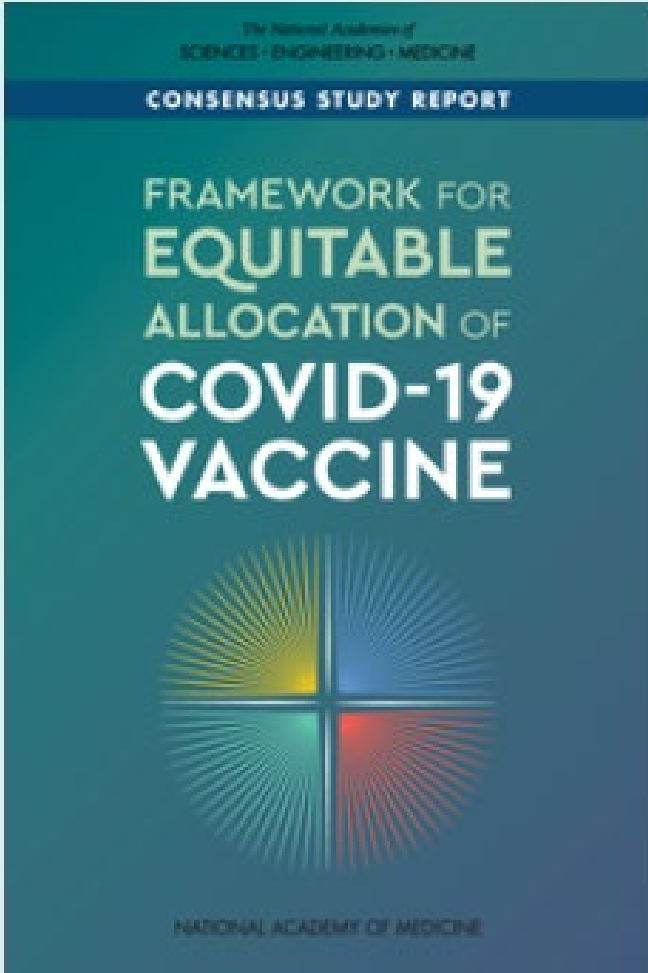


Continuous Monitoring
Surveillance

NASEM Framework

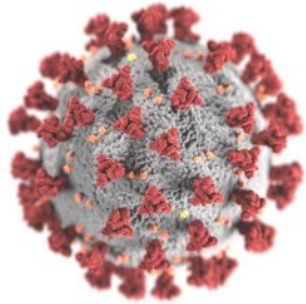
TN State Pandemic Vaccination Plan

- Submitted to CDC October 16
- Informed by the NASEM Framework, CDC Playbook, and a robust stakeholder group



COVID-19 Vaccination Plan

Tennessee COVID-19 Vaccination Plan

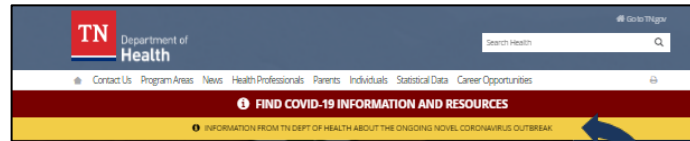


COVID-19 Vaccination Plan

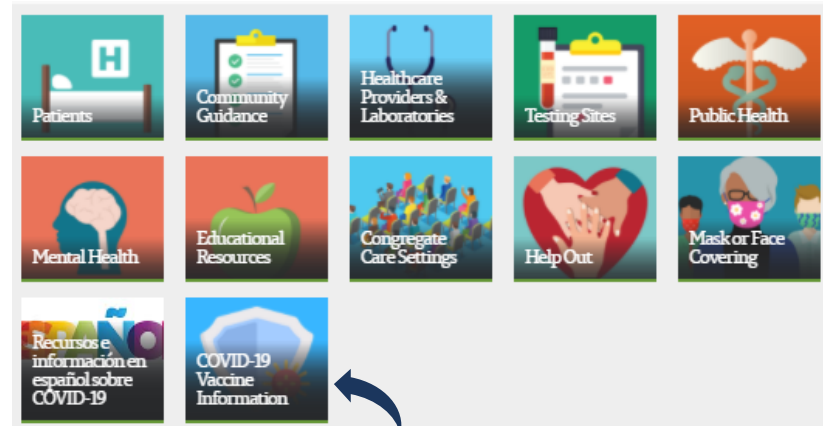
TENNESSEE

Tennessee Department of Health
10/16/2020 | V1.0

www.tn.gov/health



Click here



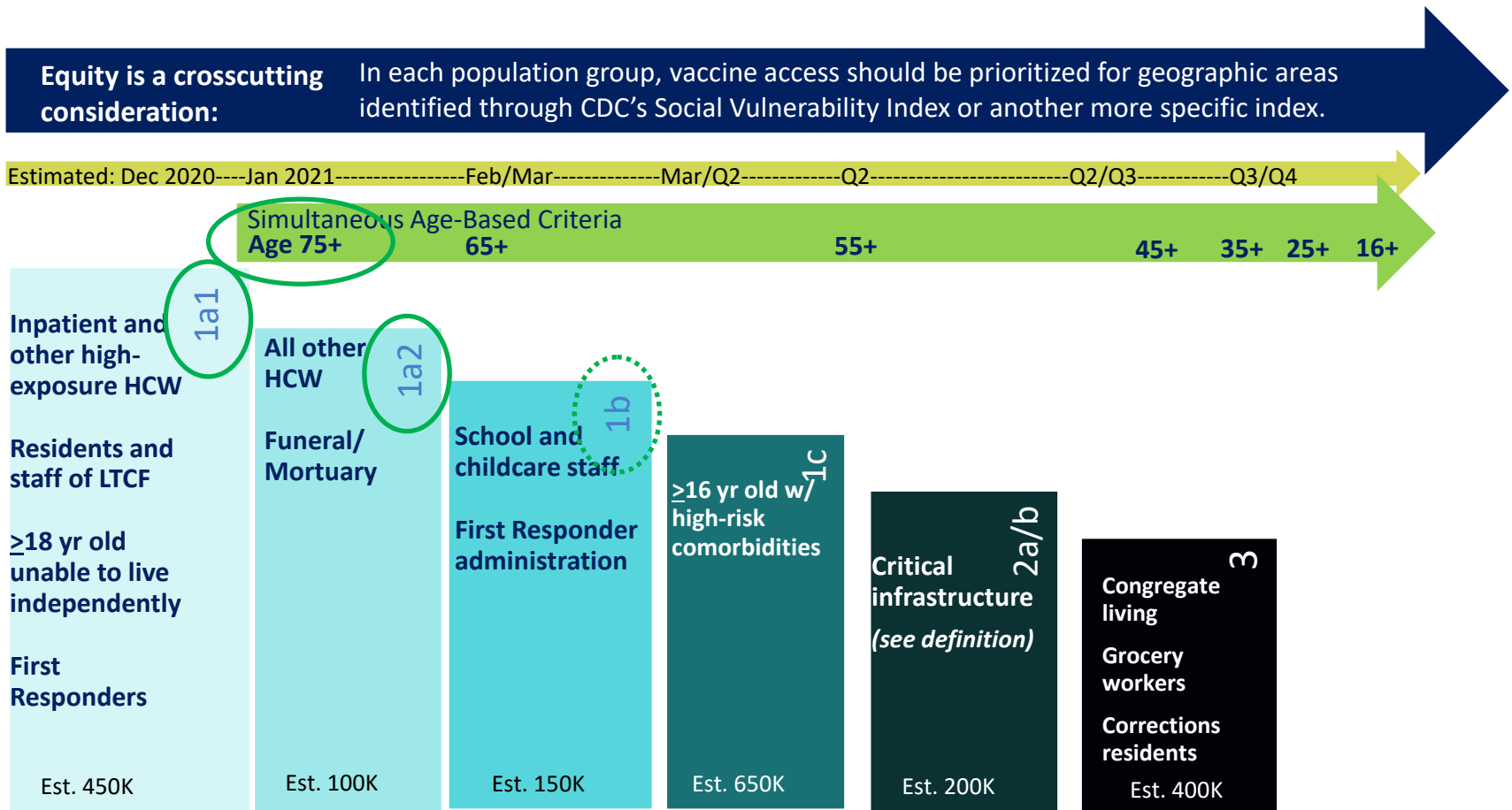
Click here

Tennessee COVID-19 Vaccine Stakeholder Group

- TDH Vaccine-Preventable Diseases and Immunization Program
- TDH Emergency Preparedness Program
- TDH Community Health Services
- TDH COVID-19 EP Response
- TDH Office of Disparities Elimination
- TDH Office of Communications and Media Relations
- Metro Health Departments (4 of 6)
- TN Pharmacist Association
- TN Chapter of the American Academy of Pediatrics
- TN Hospital Association
- TN Primary Care Association
- TN Department of Corrections
- TN Sheriffs' Association
- Vanderbilt Center for Biomedical Ethics and Society
- TN Grocers & Convenience Store Association
- TN Higher Education Commission
- TN Commission on Aging and Disabilities
- TN Home Care Association
- TennCare
- TEMA
- TN Department of Education, Office of Coordinated School Health
- TN Medical Association
- Tennessee Legislators
- Tennessee Office of Refugees
- Tennessee Health Care Coalitions
- TN Department of Intellectual and Developmental Disabilities
- Tennessee Academy of Family Physicians
- ImmunizeTN
- TN AARP
- TN Department of Mental Health and Substance Abuse Services
- TN Retail Association



Vaccine Allocation Phases



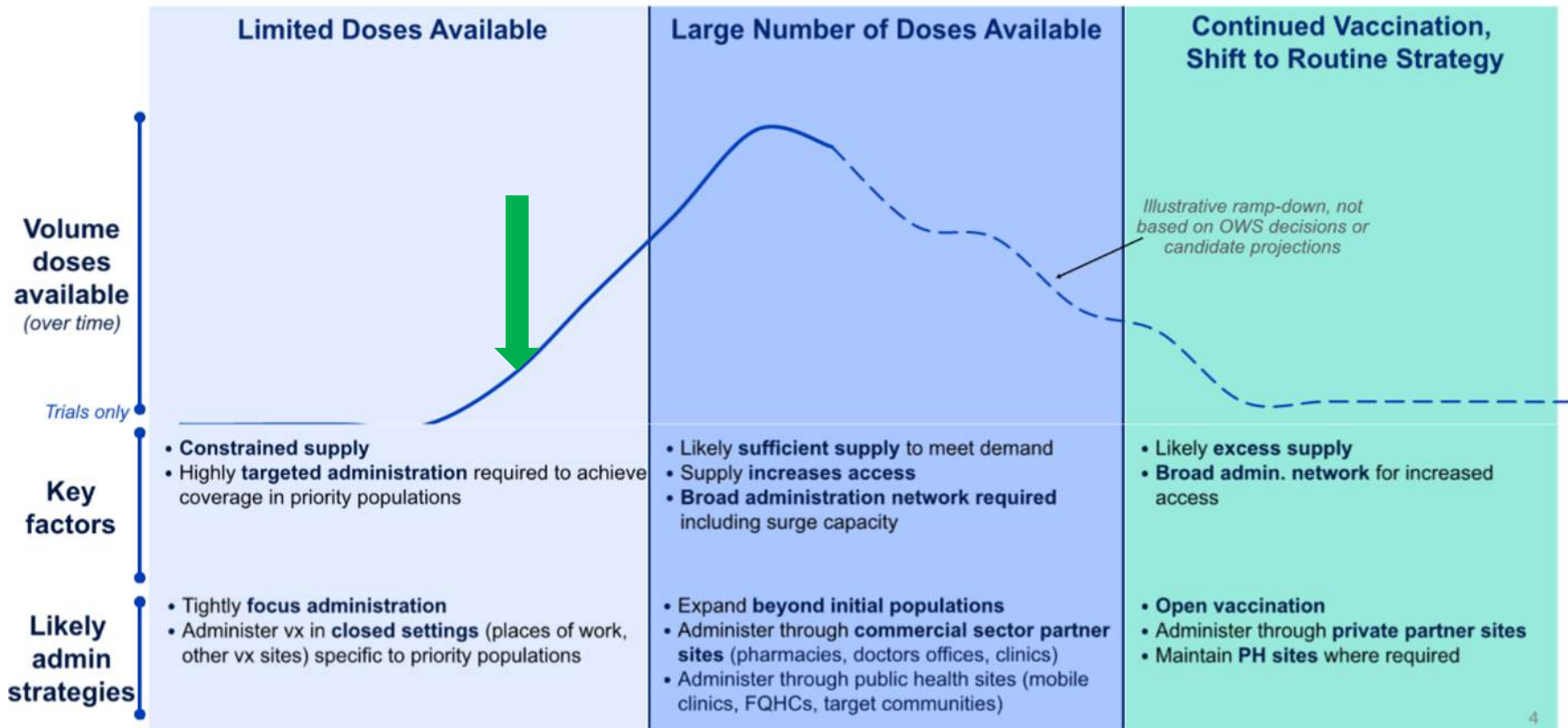
Estimated timeline and phases are preliminary and subject to change.

Adapted from <https://www.nap.edu/catalog/25917/framework-for-equitable-allocation-of-covid-19-vaccine>

CDC Pandemic Vaccine Timeline

Illustrative for planning purposes

Administration of COVID-19 vaccine will require a phased approach



FOR OFFICIAL USE ONLY - DO NOT DISTRIBUTE

COVID-19 Vaccines

2

- Two vaccines currently have an emergency use authorization from FDA
 - Pfizer and Moderna

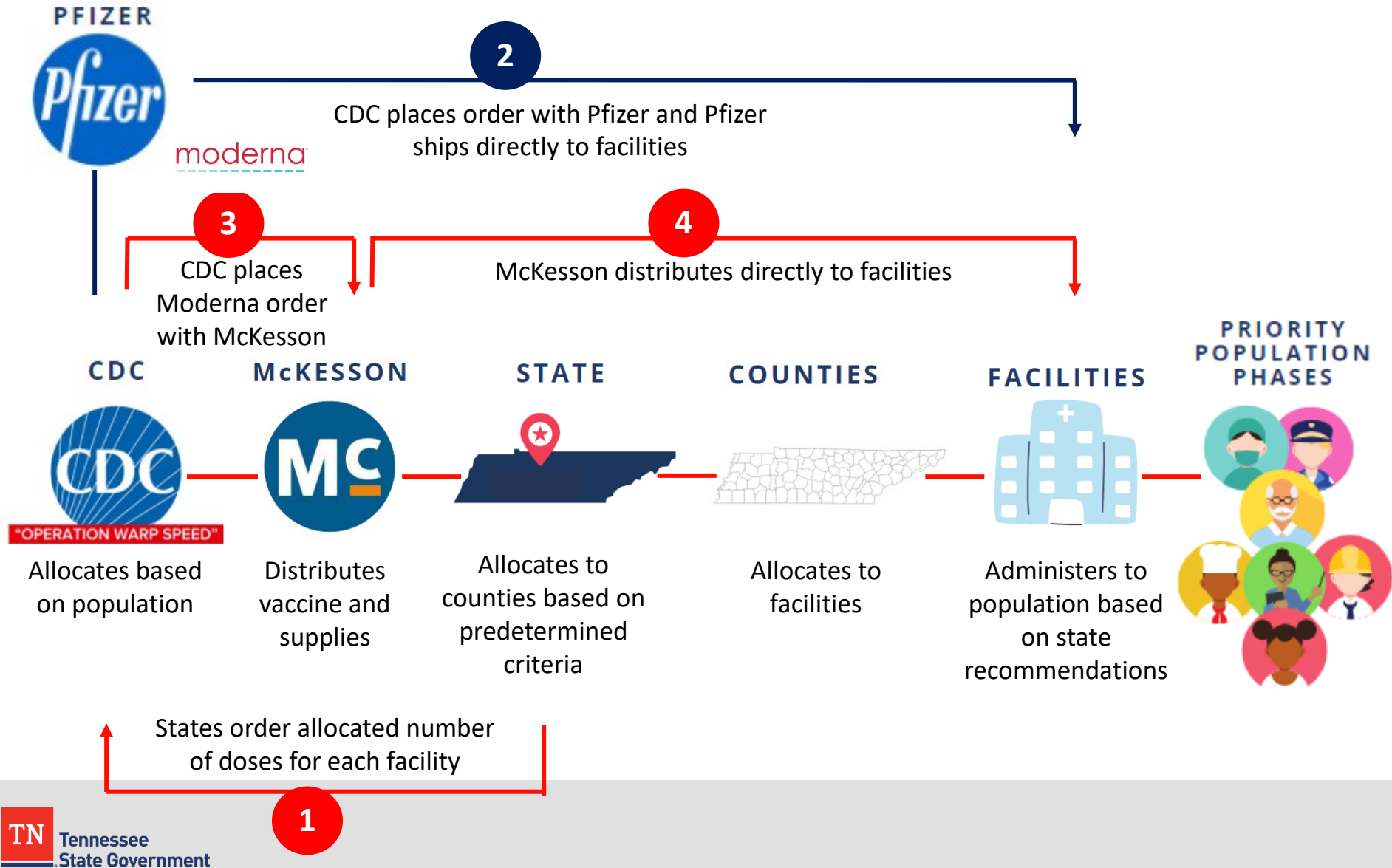
4

- Four more vaccines will likely have emergency use authorization from FDA in 2021.

5

- Five of these six vaccines require two doses
 - Both doses must be from the same manufacturer
 - If the first dose is Pfizer, the second dose must be Pfizer as well.

Vaccine Allocation and Distribution



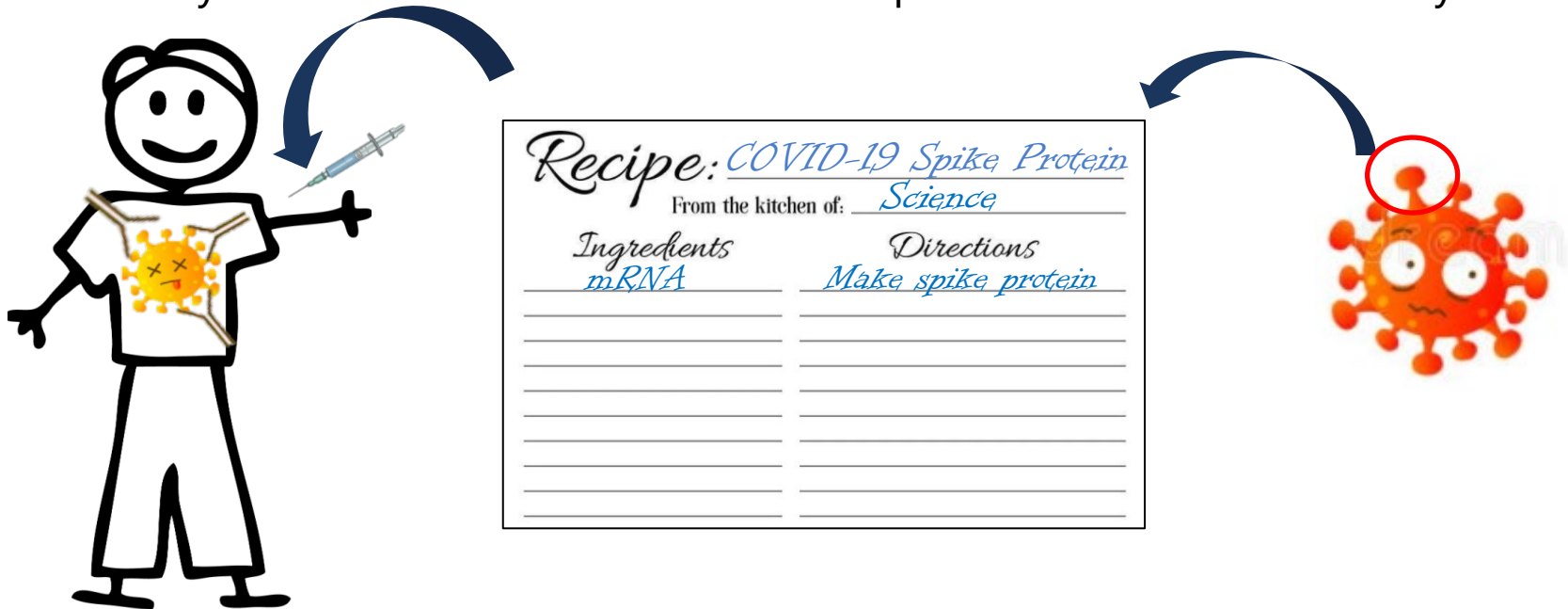
Vaccines Are Safe

- Pfizer and Moderna vaccines had no significant safety concerns identified during the clinical trials
- Common side effects experienced after vaccination for both Pfizer and Moderna were:
 - Headache
 - Tiredness
 - Redness and soreness where they got the shot
 - Fever
- These generally go away within a few days

Pfizer/BioNTech mRNA Vaccine

mRNA vaccines:

- Work by giving the body a recipe to make the “spike protein”
- Body makes antibodies to the protein
- If the body ever sees the virus it will see that protein and know to destroy it



Two Dose Series

- Most of the vaccines need two doses, and both doses are required to best protect the person.
- After the second dose, it could take up to two weeks to be fully protected.

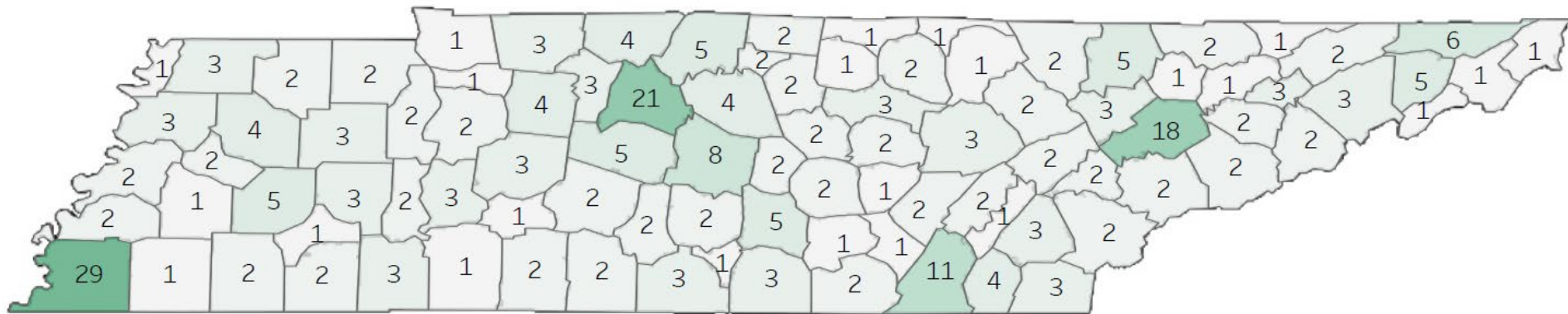


- **Continue social distancing and wearing face coverings until most of the population has received the vaccine.**

Challenges

- Pfizer vaccine
 - Requires storage at -70 C
 - Minimum packaging is ~1,000 doses
 - 41 boxes per week
- Moderna vaccine
 - Requires frozen or refrigerated storage
 - Minimum packaging 100 doses
 - 70 boxes this week

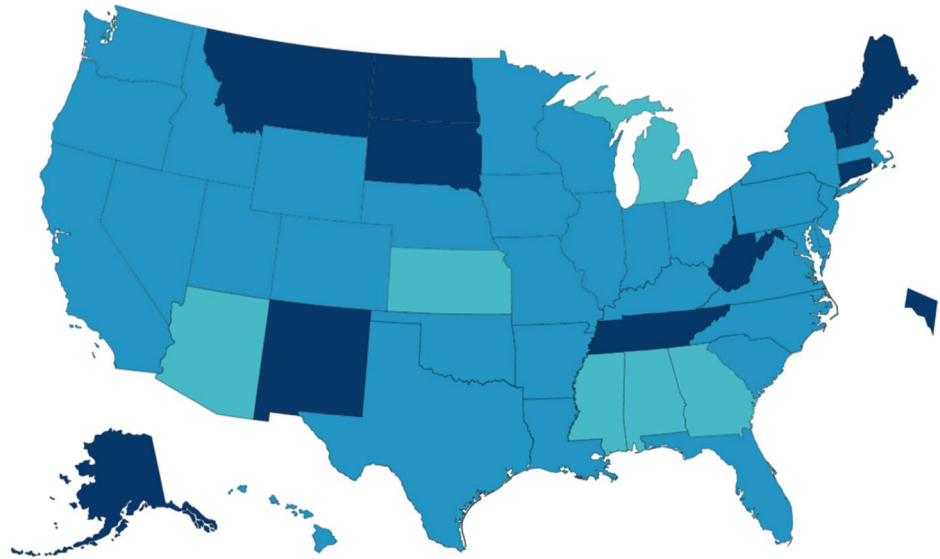
2,001 sites would like vaccine
306 sites are onboarded to get vaccine
TN has 111 boxes of vaccines 😞



TN Vaccination

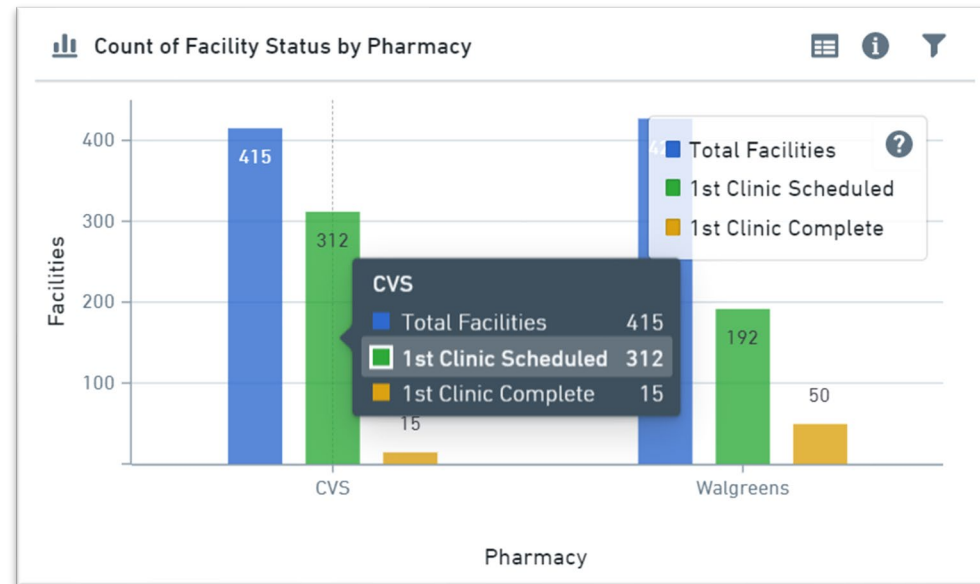
- 382,125 doses allocated (first doses)
 - Ave 4,022 doses/county
- 328,200 doses delivered
 - Ave 3,454
- 182,567 (56%) administered as of 1/5/21
 - 3.2% of US vaccination
 - 1.6 x expected based on population

Total Number of People Initiating Vaccination (1st Dose Received) Reported to the CDC by State/Territory and for Selected Federal Entities per 100,000



Long-Term Care Facilities

- Most LTCFs (842) opted in to the federal partnership with Walgreens/CVS
- TDH has allocated >127,000 doses of vaccine
 - 65,000 for SNFs
 - 62,000 for ALFs and others
- LTCFs not in the partnership are vaccinated by independent pharmacies
- Walgreens/CVS began vaccinating last week
 - 65 facilities with first clinics completed
 - 504 scheduled



Finding Your Phase: www.covid19.tn.gov

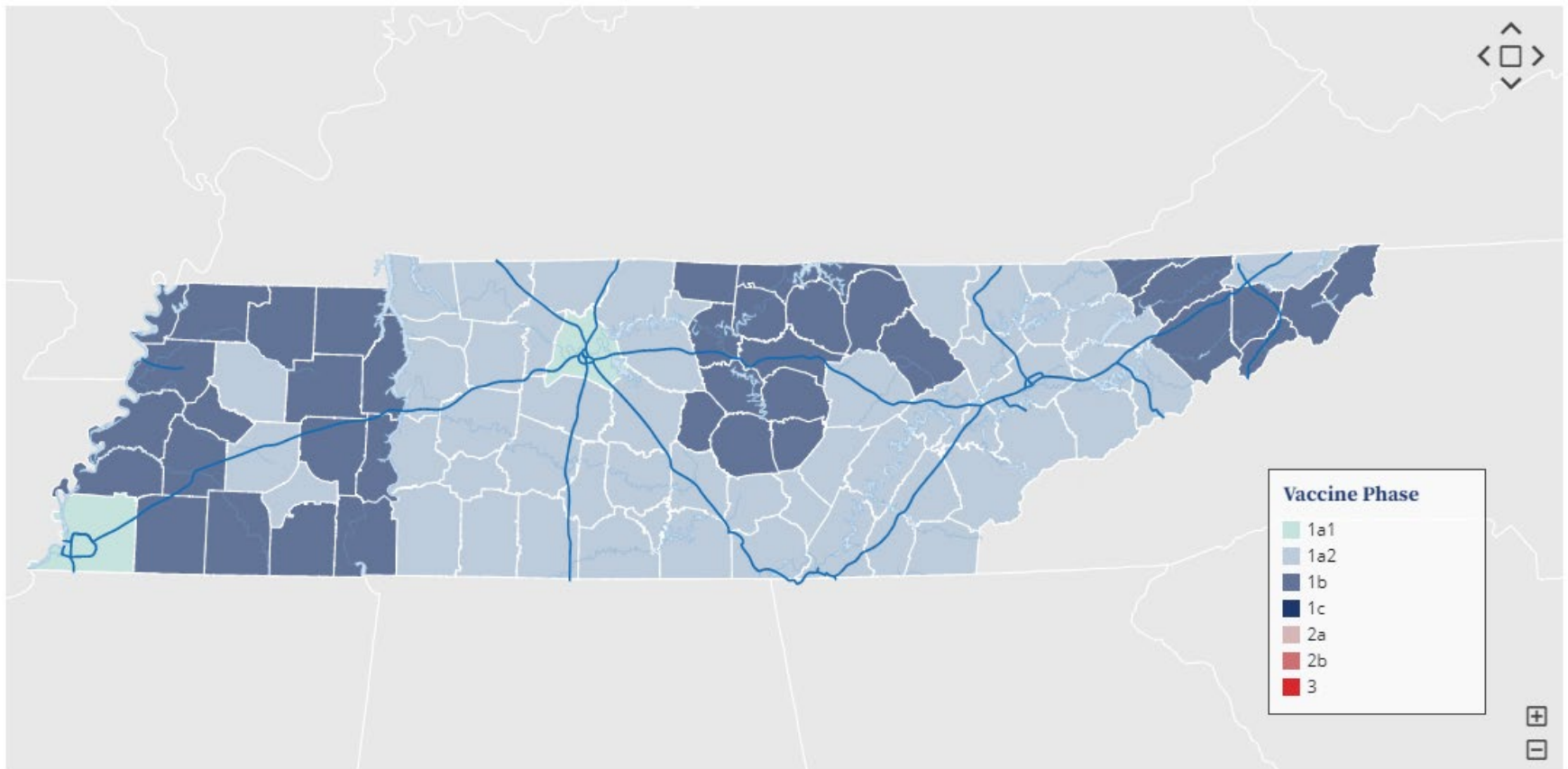


Gov. Lee Announces New COVID-19 Vaccine Eligibility Tool

Getting Vaccinated: www.covid19.tn.gov

RISK-BASED PHASE BY COUNTY

AGE-BASED PHASE BY COUNTY



HEALTH DEPT. VACCINE AVAILABILITY

County Vaccine Availability: www.covid19.tn.gov

VACCINE INFORMATION FOR WEDNESDAY, JANUARY 6, 2021

****ALL COUNTIES GIVE VACCINE BY APPOINTMENT ONLY.****

COUNTY	CURRENT PHASES	PHONE NUMBER
ANDERSON	1a1, 1a2, 75 yrs and older	865-549-5343
BEDFORD	1a1, 1a2, 75 yrs and older	931-490-8312
BENTON	1a1, 1a2, 1b, 75 yrs and older	731-884-2645
BLEDSON	1a1, 1a2, 75 yrs and older	423-447-2149
BLOUNT	1a1, 1a2, 75 yrs and older	865-549-5343
BRADLEY	1a1, 1a2, 75 yrs and older	423-728-7020
CAMPBELL	1a1, 1a2, 75 yrs and older	865-549-5343
CANNON	1a1, 1a2, 1b, 75 yrs and older	615-563-4243
CARROLL	1a1, 1a2, 1b, 75 yrs and older	731-884-2645
CARTER	1a1, 1a2, 1b, 75 yrs and older	423-543-2521
CHEATHAM	1a1, 1a2, 75 yrs and older	615-792-4318
CHESTER	1a1, 1a2, 75 yrs and older	731-421-6782
CLAIBORNE	1a1, 1a2, 75 yrs and older	865-549-5343
CLAY	1a1, 1a2, 1b, 75 yrs and older	931-243-2651
COCKE	1a1, 1a2, 75 yrs and older	865-549-5343
COFFEE	1a1, 1a2, 75 yrs and older	931-490-8312
CROCKETT	1a1, 1a2, 1b, 75 yrs and older	731-884-2645
CUMBERLAND	1a1, 1a2, 75 yrs and older	931-484-6196
DAVIDSON	1a1	615-862-7777
DECATUR	1a1, 1a2, 1b, 75 yrs and older	731-421-6782
DEKALB	1a1, 1a2, 1b, 75 yrs and older	615-597-7599
DICKSON	1a1, 1a2, 75 yrs and older	615-446-2839
DYER	1a1, 1a2, 1b, 75 yrs and older	731-884-2645
FAYETTE	1a1, 1a2, 1b, 75 yrs and older	731-421-6782
FENTRESS	1a1, 1a2, 1b, 75 yrs and older	931-879-9936
FRANKLIN	1a1, 1a2, 75 yrs and older	931-967-3826
GIBSON	1a1, 1a2, 75 yrs and older	731-884-2645
GILES	1a1, 1a2, 75 yrs and older	931-490-8312
GRAINGER	1a1, 1a2, 75 yrs and older	865-549-5343
GREENE	1a1, 1a2, 1b, 75 yrs and older	423-798-1749
GRUNDY	1a1, 1a2, 75 yrs and older	931-692-3641
HAMBLETON	1a1, 1a2, 75 yrs and older	865-549-5343
HAMILTON	1a1, 1a2, 75 yrs and older	423-209-8383
HANCOCK	1a1, 1a2, 1b, 75 yrs and older	423-733-2228
HARDEMAN	1a1, 1a2, 1b, 75 yrs and older	731-421-6782
HARDIN	1a1, 1a2, 1b, 75 yrs and older	731-421-6782
HAWKINS	1a1, 1a2, 1b, 75 yrs and older	423-357-5341 (Church Hill) 423-272-7641 (Rogersville)
HAYWOOD	1a1, 1a2, 1b, 75 yrs and older	731-421-6782

HENDERSON	1a1, 1a2, 1b, 75 yrs and older	731-421-6782
HENRY	1a1, 1a2, 1b, 75 yrs and older	731-884-2645
HICKMAN	1a1, 1a2, 75 yrs and older	931-490-8312
HOUSTON	1a1, 1a2, 75 yrs and older	931-289-3463
HUMPHREYS	1a1, 1a2, 75 yrs and older	931-296-2231
JACKSON	1a1, 1a2, 1b, 75 yrs and older	931-268-0218
JEFFERSON	1a1, 1a2, 75 yrs and older	865-549-5343
JOHNSON	1a1, 1a2, 1b, 75 yrs and older	423-727-9731
KNOX	1a1, 1a2, 75 yrs and older	865-215-5555
LAKE	1a1, 1a2, 1b, 75 yrs and older	731-884-2645
LAUDERDALE	1a1, 1a2, 1b, 75 yrs and older	731-421-6782
LAWRENCE	1a1, 1a2, 75 yrs and older	931-490-8312
LEWIS	1a1, 1a2, 75 yrs and older	931-490-8312
LINCOLN	1a1, 1a2, 75 yrs and older	931-490-8312
LOUDON	1a1, 1a2, 75 yrs and older	865-549-5343
MACON	1a1, 1a2, 1b, 75 yrs and older	615-666-2142
MADISON	1a1	731-240-1771
MARION	1a1, 1a2, 75 yrs and older	423-815-1331 OR 423-815-1332
MARSHALL	1a1, 1a2, 75 yrs and older	931-490-8312
MAURY	1a1, 1a2, 75 yrs and older	931-490-8312
MCMINN	1a1, 1a2, 75 yrs and older	423-745-7431
MCNAIRY	1a1, 1a2, 1b, 75 yrs and older	731-421-6782
MEIGS	1a1, 1a2, 75 yrs and older	423-334-5185
MONROE	1a1, 1a2, 75 yrs and older	865-549-5343
MONTGOMERY	1a1, 1a2, 75 yrs and older	931-648-5747
MOORE	1a1, 1a2, 75 yrs and older	931-490-8312
MORGAN	1a1, 1a2, 75 yrs and older	865-549-5343
OBION	1a1, 1a2, 1b, 75 yrs and older	731-884-2645
OVERTON	1a1, 1a2, 1b, 75 yrs and older	931-823-6260
PERRY	1a1, 1a2, 75 yrs and older	931-490-8312
PICKETT	1a1, 1a2, 1b, 75 yrs and older	931-864-3178
POLK	1a1, 1a2, 75 yrs and older	423-338-4533 (Benton) 423-496-3275 (Copper Basin)
PUTNAM	1a1, 1a2, 1b, 75 yrs and older	931-528-2531
RHEA	1a1, 1a2, 75 yrs and older	423-775-7819
ROANE	1a1, 1a2, 75 yrs and older	865-549-5343
ROBERTSON	1a1, 1a2, 75 yrs and older	615-384-4504
RUTHERFORD	1a1, 1a2, 75 yrs and older	615-898-7785
SCOTT	1a1, 1a2, 75 yrs and older	865-549-5343
SEQUATCHIE	1a1, 1a2, 75 yrs and older	423-949-3619
SEVIER	1a1, 1a2, 75 yrs and older	865-549-5343
SHELBY	1a1	901-222-6275
SMITH	1a1, 1a2, 1b, 75 yrs and older	615-735-0242
STEWART	1a1, 1a2, 75 yrs and older	931-232-5329
SULLIVAN	1a1	423-279-2777
SUMNER	1a1, 1a2, 75 yrs and older	615-206-1100

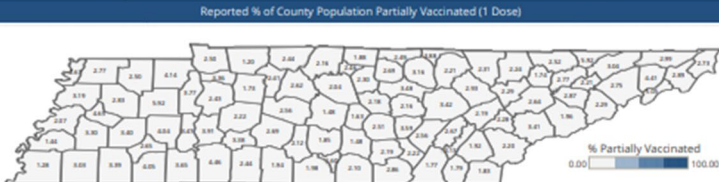
TIPTON	1a1, 1a2, 1b, 75 yrs and older	731-421-6782
TROUSDALE	1a1, 1a2	615-374-2112
UNICOI	1a1, 1a2, 1b, 75 yrs and older	423-735-9500
UNION	1a1, 1a2, 75 yrs and older	865-549-5343
VAN BUREN	1a1, 1a2, 1b, 75 yrs and older	931-946-2438
WARREN	1a1, 1a2, 1b, 75 yrs and older	931-473-8468
WASHINGTON	1a1, 1a2, 1b, 75 yrs and older	423-975-2200
WAYNE	1a1, 1a2, 75 yrs and older	931-490-8312
WEAKEY	1a1, 1a2, 1b, 75 yrs and older	731-884-2645
WHITE	1a1, 1a2, 1b, 75 yrs and older	931-836-2201
WILLIAMSON	1a1, 1a2, 75 yrs and older	615-794-1542
WILSON	1a1, 1a2, 75 yrs and older	615-444-5325

www.covid19.tn.gov



*Vaccines reported within the last 24 hours

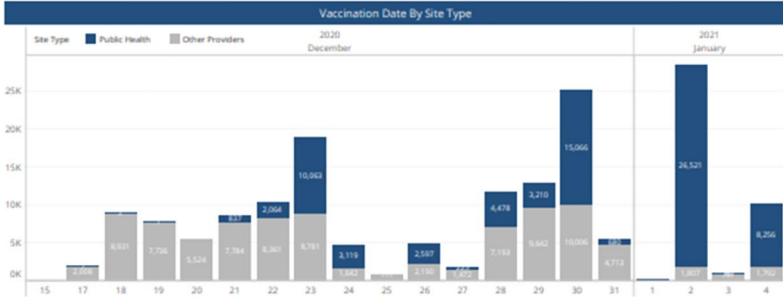
Providers administering COVID-19 vaccines are expected to report vaccine doses to the state immunization information system (TennIS) within 24 hours of administration and are required to report any adverse events within 30 days of administration.



Based on reported doses to the state immunization information system (TennIS) and 2019 county population data.

Age group			Patient Race		
Age Group	Vaccinations	% of Vaccinations	Patient Race	Vaccinations	% of Vaccinations
16-20 years	492	0.3%	Asian	1,637	1.0%
21-30 years	19,202	11.4%	Black or African American	6,075	3.6%
31-40 years	30,041	17.8%	White	74,009	43.8%
41-50 years	30,390	18.0%	Other/Multiracial	9,565	5.7%
51-60 years	31,860	18.8%	Unknown	77,784	46.0%
61-70 years	22,253	13.2%			
71-80 years	20,023	11.8%			
81+ years	14,793	8.7%			
Pending	16	0.0%			
Total	169,070	100.0%	Total	169,070	100.0%

Patient Ethnicity			Patient Sex		
Patient Ethnicity	Vaccinations	% of Vaccinations	Patient Sex	Vaccinations	% of Vaccinations
Hispanic Or Latino	2,915	1.7%	Female	107,223	63.4%
Not Hispanic Or Latino	110,679	65.5%	Male	61,470	36.4%
Unknown	55,476	32.8%	Other	7	0.0%
Total	169,070	100.0%	Unknown	370	0.2%
			Total	169,070	100.0%



Public Health: local, regional, and metro health departments

Other Providers: hospitals, pharmacies, private practice, etc



Overall US COVID-19 Vaccine Distribution and Administration

Total Doses Distributed	Total Number of People Initiating Vaccination (1 st Dose Received)
17,020,575	4,836,469

View

View:

☐ Distributed

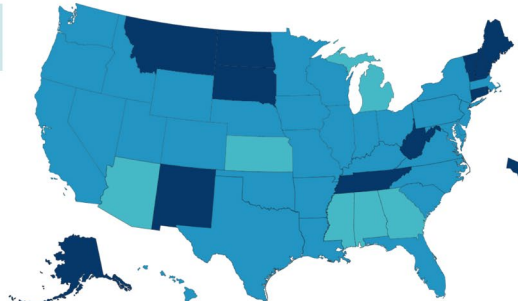
Total Number of People Initiating Vaccination (1st Dose R

Total Number of People Initiating Vaccination (1st Dose Received) Reported to the CDC by State/Territory and for Selected Federal Entities per 100,000

Federal Pharmacy Partnership for Long-Term Care Program (Subset of Overall Numbers)

Doses Distributed for Use in Long-Term Care Facilities	Number of People Initiating Vaccination (1 st Dose Received) in Long-Term Care Facilities
3,260,775	429,066

CDC | Updated: Jan 06, 2021 As of 9:00am ET

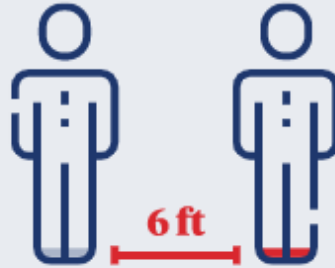


<https://covid.cdc.gov/covid-data-tracker/#vaccinations>

While We're Waiting...



Clean Your Hands Often



Avoid Close Contact



Stay Home If You Are Sick



Wear A Facemask



Cover Your Coughs And Wash Hands Often



Clean And Disinfect

**VACCINES
CAUSE
ADULTS**



Thank you!
877-857-2945